

Software Installation Manual (V2.0)
Parking Guidance System

➤ Software Overview

Parking Guidance System (PGS) is an electronic system benefits drivers, car park management and society. The design concept is to pinpoint available parking spaces and lead drivers to park, reduce the time they spend looking for a space and maximize facility usage.

As an optional product (PGS is a standalone system), our Software is a multi-language, graphical application developed based on Window 7 OS and Microsoft SQL database, with intuitive UI, simple operation and complete functions.

Key functions:

1. Display real-time occupancy status and parking time of each space, availability information of each parking level and the entire car park;
2. Various statistics such as Parking Time, Parking Usage, Car Flow and Overtime Parking
3. Multiuser with different rights to access the system
4. Remote configuration to manage LED Display from the office
5. Remote monitoring of PGS components

➤ System Requirement

OS	Windows Server 2008 R2 Standard 64 Bit	Windows 7 Ultimate 64 Bit
OS user	Administrator	Administrator
.NET Framework	.NET Framework 4	.NET Framework 4
Database	Microsoft SQL Server 2008 R2 Standard 64 Bit	Microsoft SQL Server 2008 R2 Standard 64 Bit
Instance	sql2008	sql2008
Database user	sa	sa
Password	N/A	N/A

➤ Installation

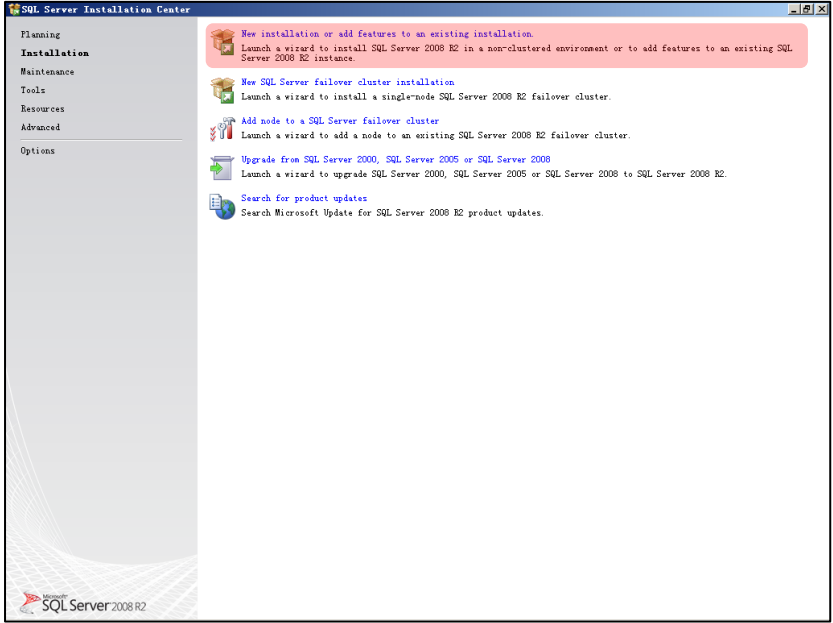
1. Install SQL

Make sure your system environment meets the requirement of this installation and follow the steps one by one to install. In case of any problem installing SQL, please refer to relevant documentation from Microsoft.



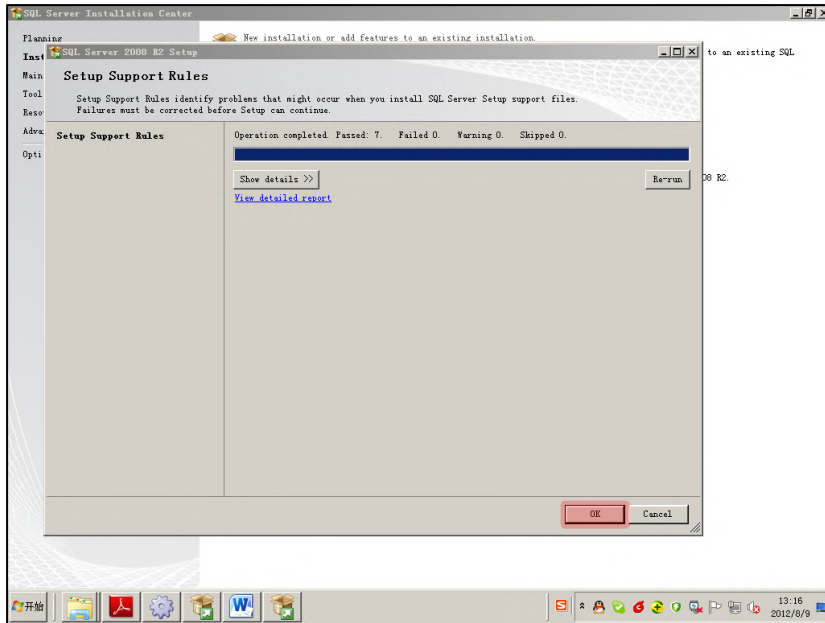
Planning stage

Click *Installation* to proceed.

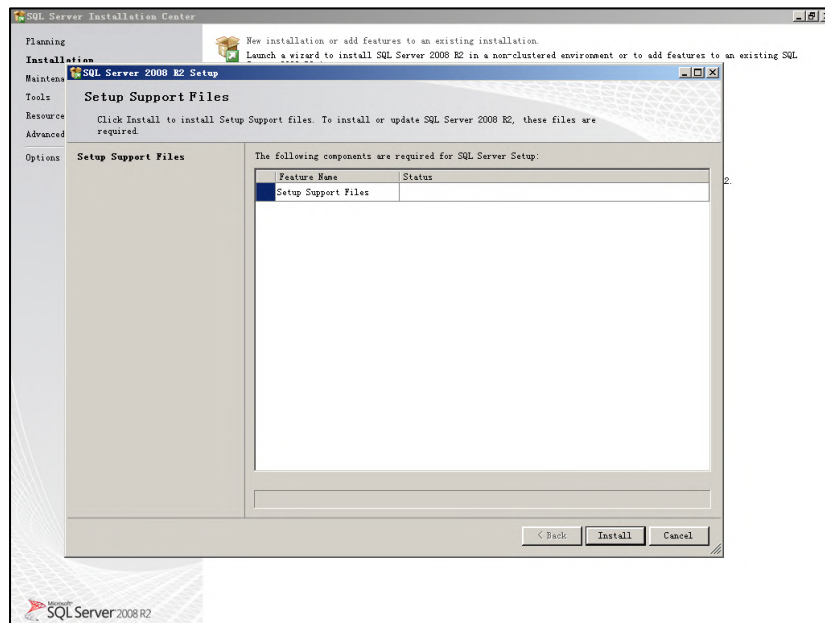


Installation options

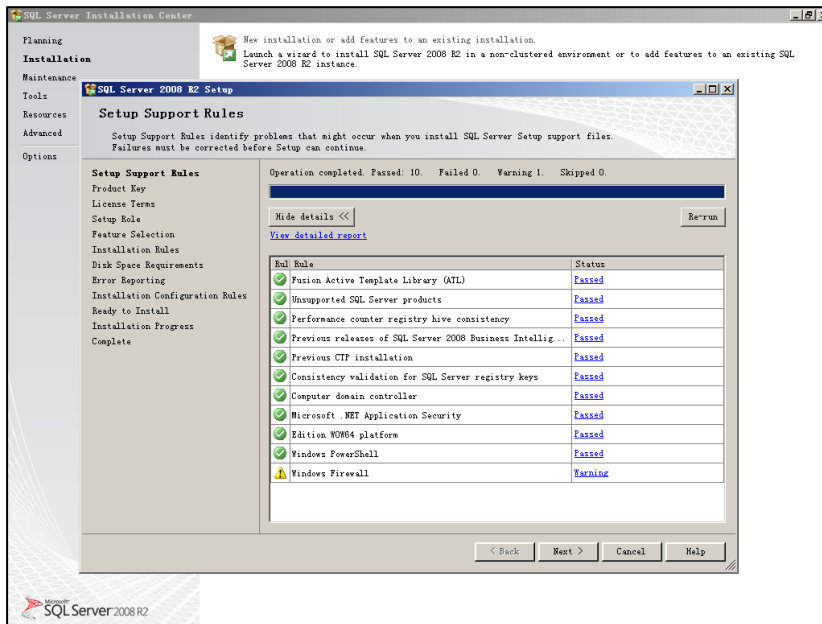
Choose *New installation or add features to an existing installation* to.



Setup Support Rules
Click **OK** to proceed.

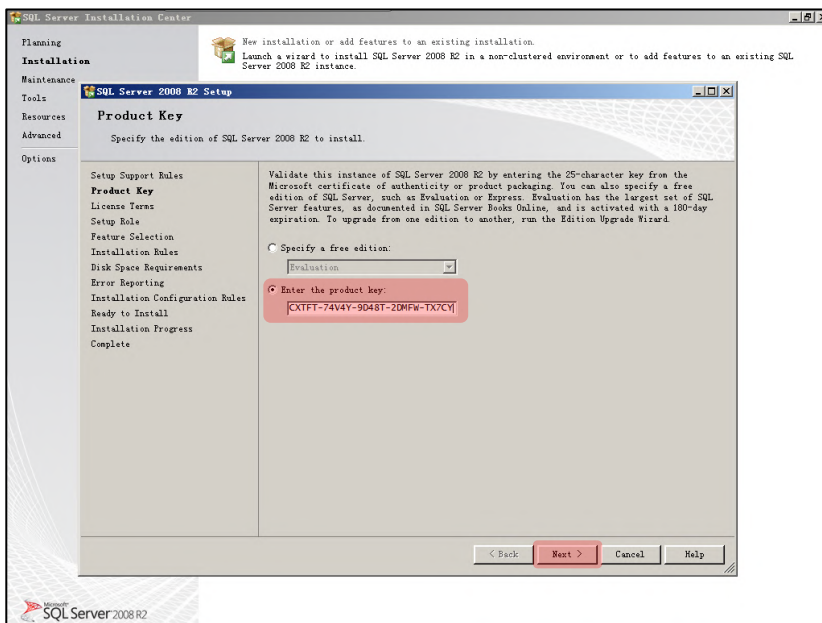


Setup Support Files
Click **Install** to proceed.



Setup Support Rules Done

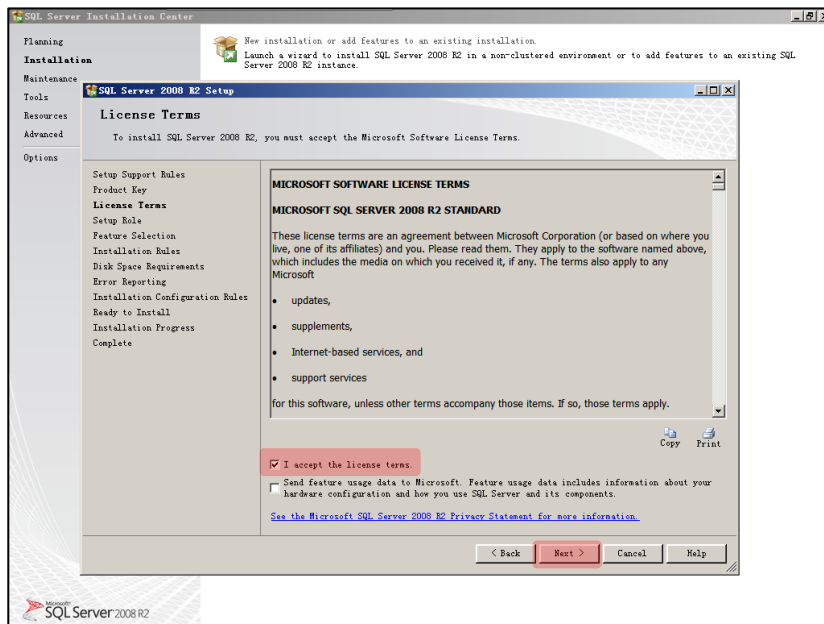
Click **Next** to proceed.



Product Key

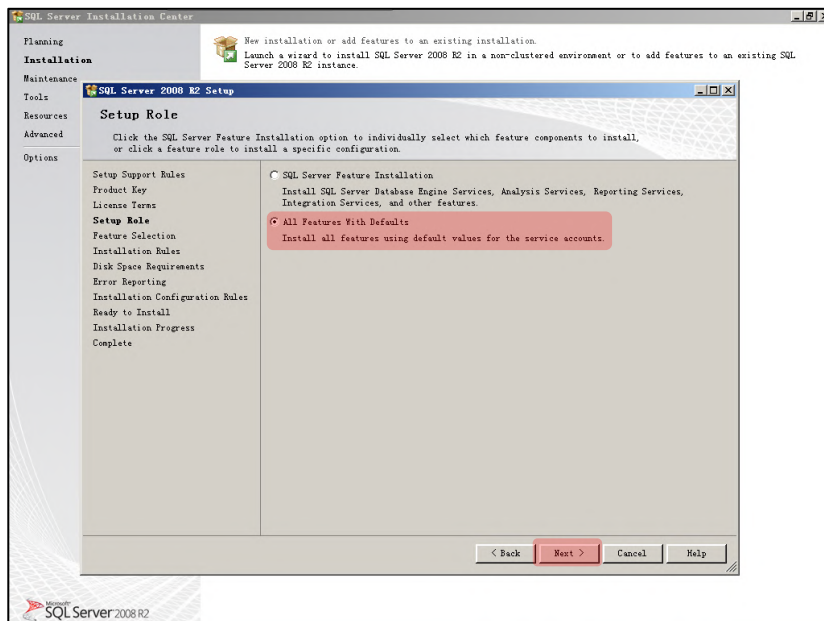
Enter **product key** and click

Next to proceed.



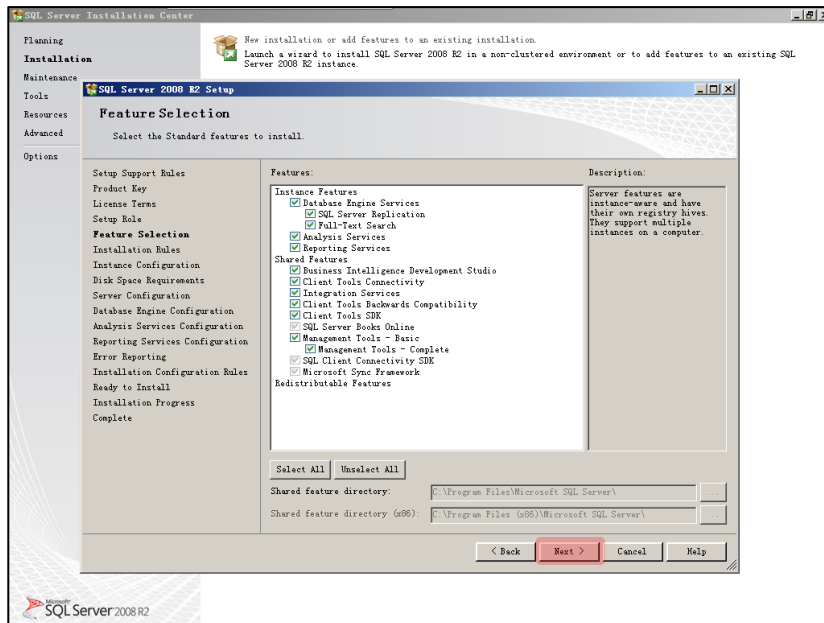
License Terms

Tick **I accept the license terms** and click **Next** to proceed.



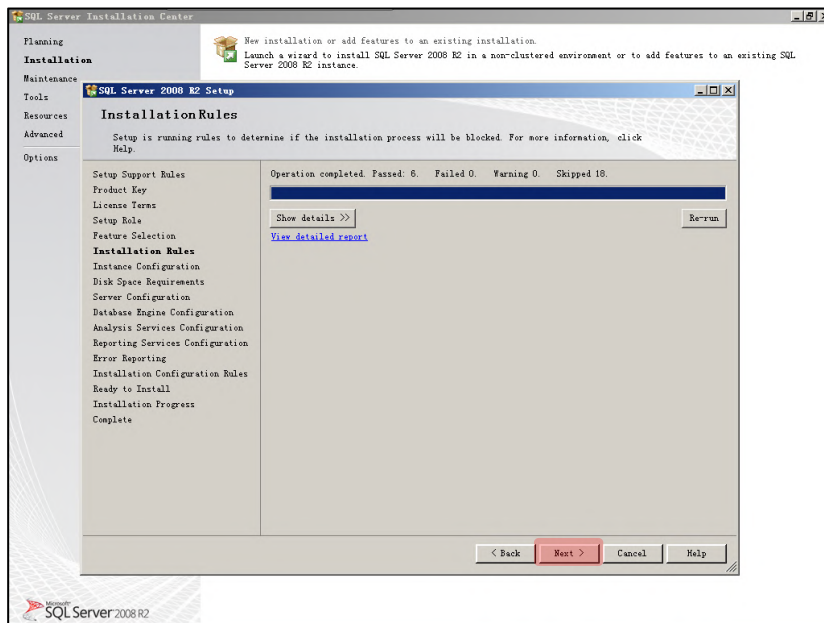
Setup Role

Tick **All Features With Defaults** and click **Next** to proceed.



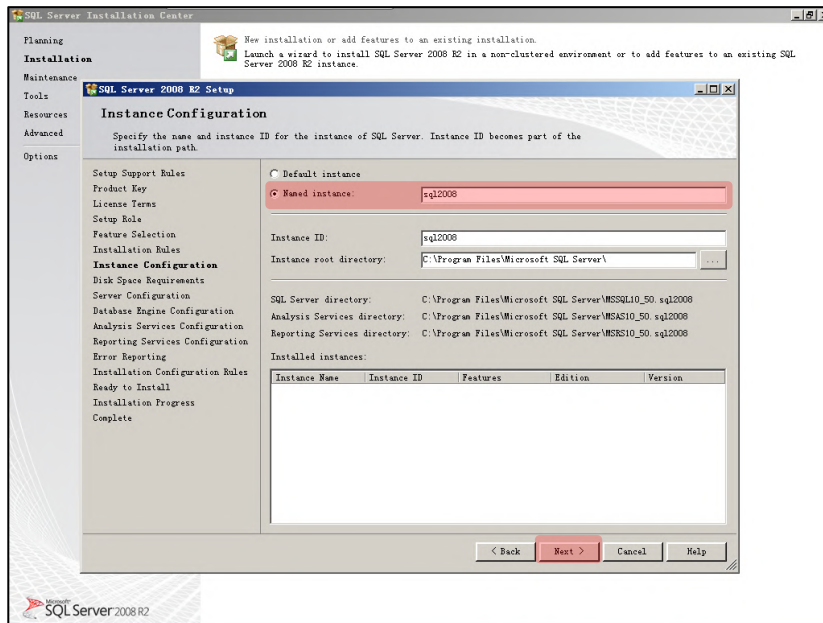
Feature Selection

Click **Next** to proceed.



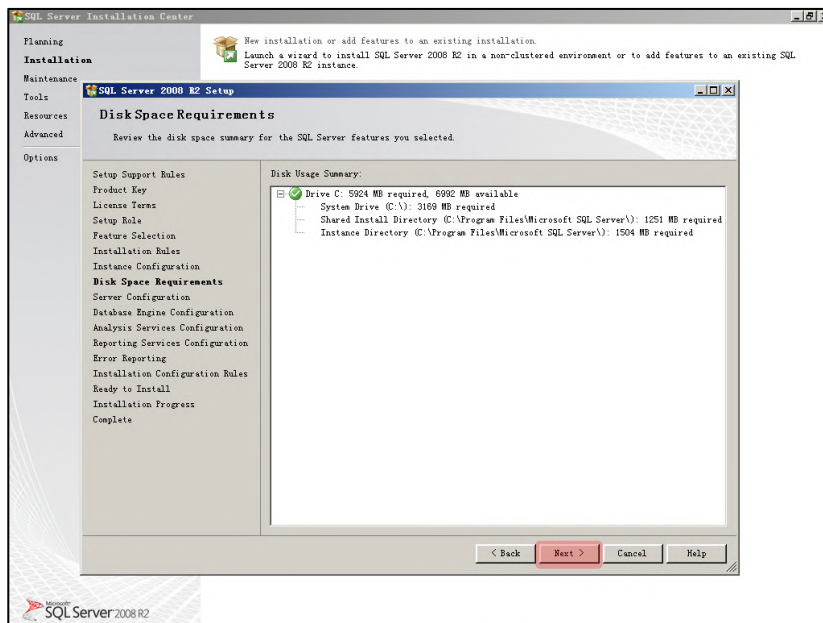
Installation Rules

Click **Next** to proceed.



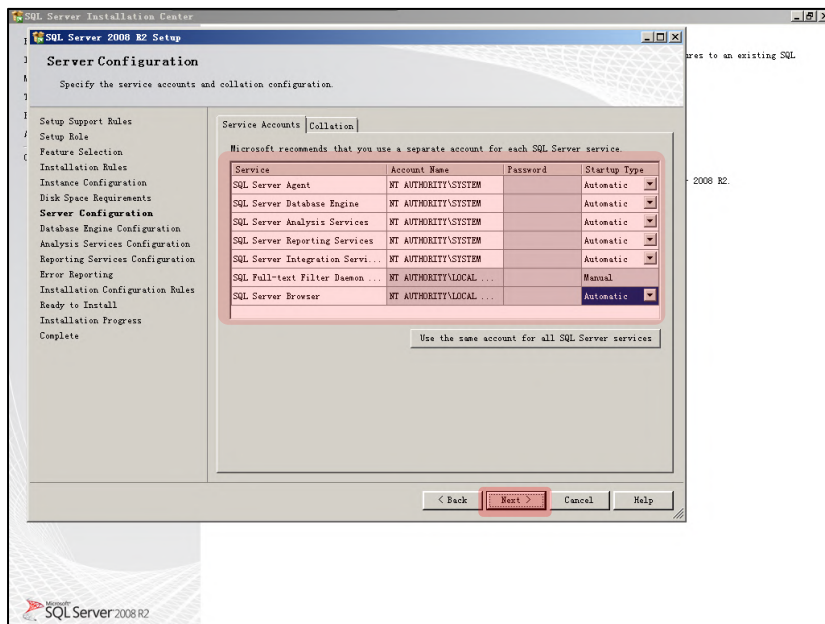
Instance Configuration

Tick **Named instance**, input **sql2008** and click **Next** to proceed.



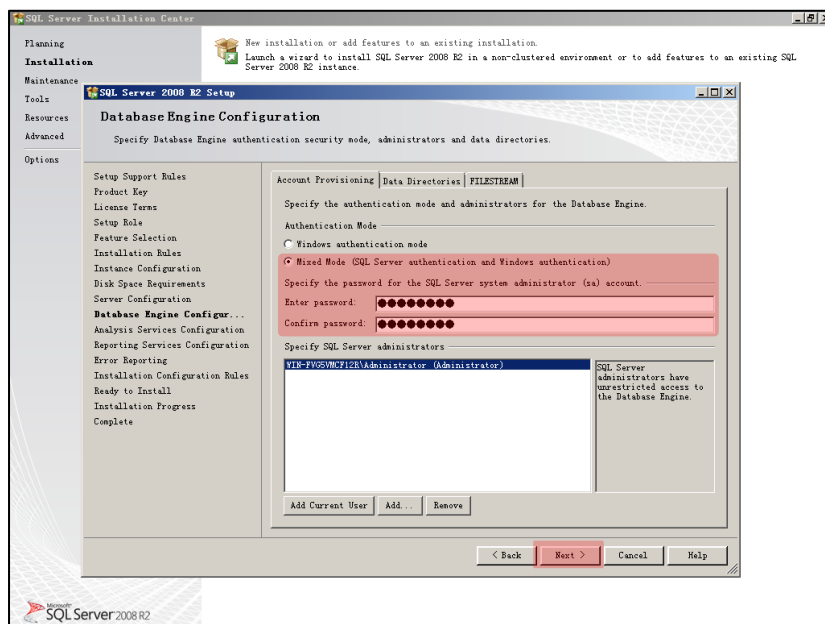
Disk Space Requirements

Click **Next** to proceed.



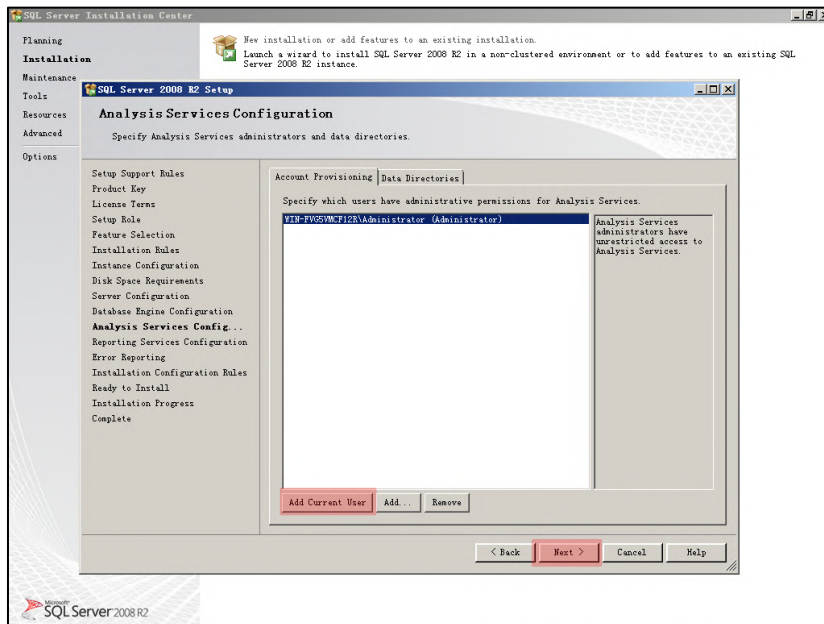
Server Configuration

Choose **options accordingly (Important)** and click **Next** to proceed.



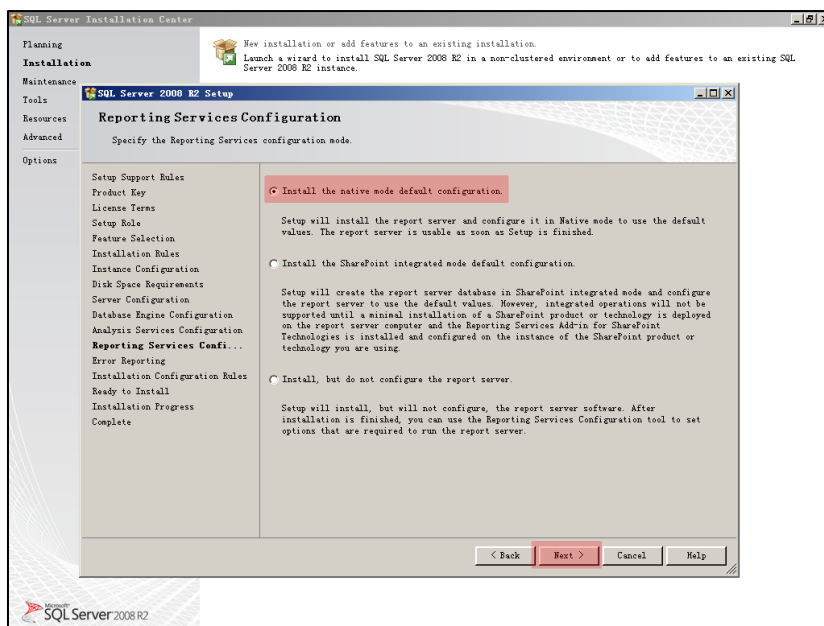
Database Engine Configuration

Tick **Mixed Mode (SQL...)**, enter password (anything you like), confirm it and click **Next** to proceed.



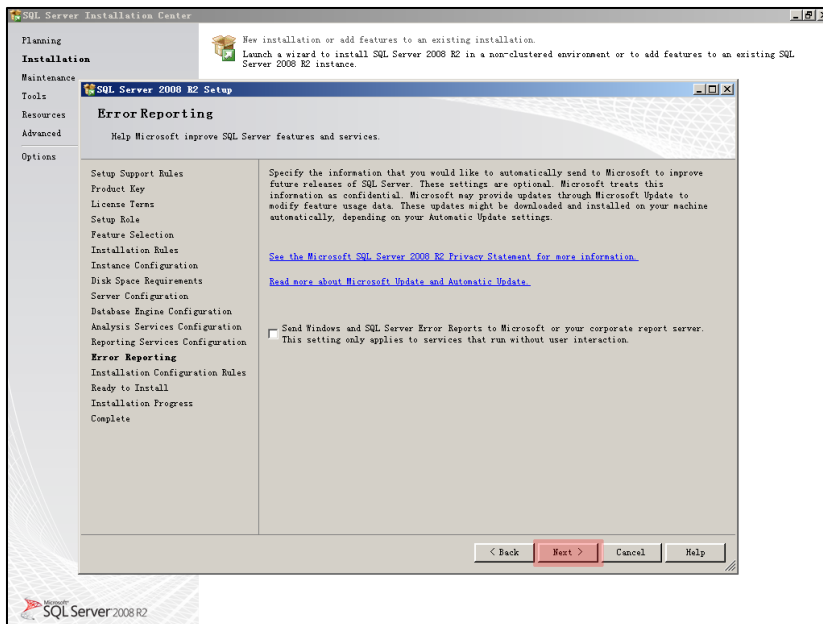
Analysis Services Configuration

Click **Add Current User** (if it's not in the blank area), and then click **Next** to proceed.



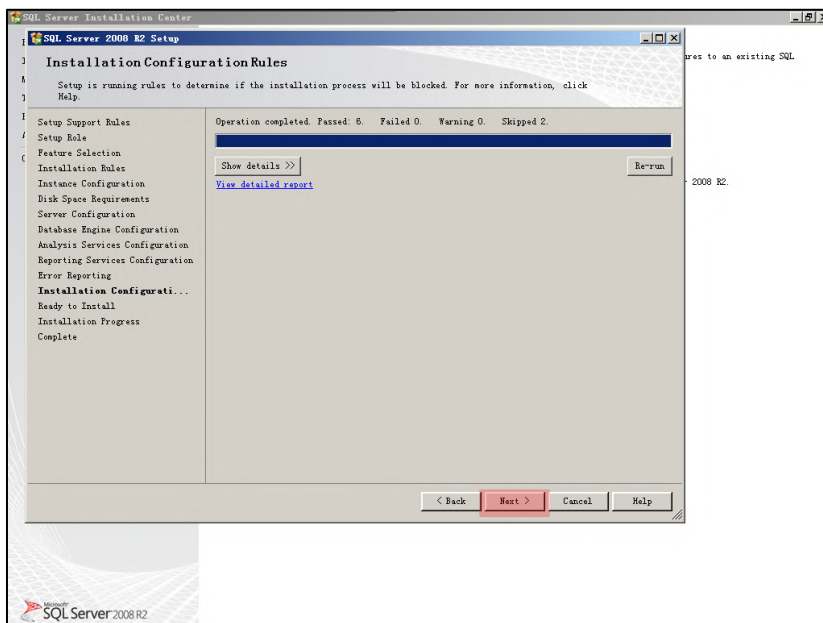
Reporting Services Configuration

Tick **Install the native mode default configuration** and click **Next** to proceed.



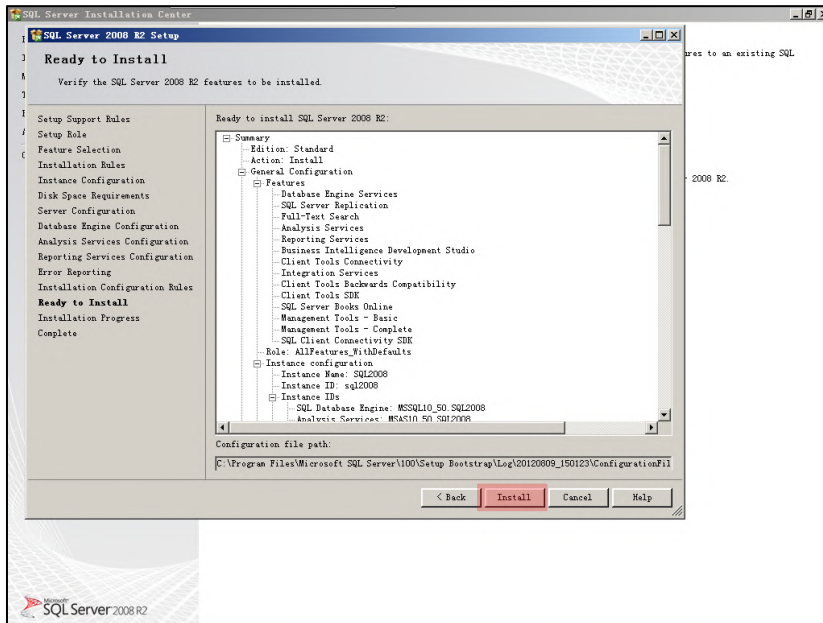
Error Reporting

Click **Next** to proceed.

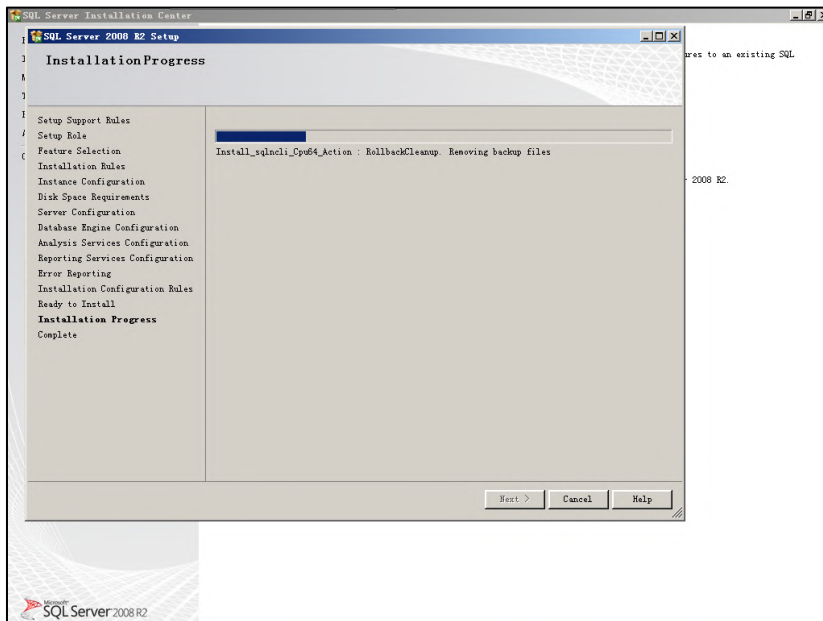


Installation Configuration Rules

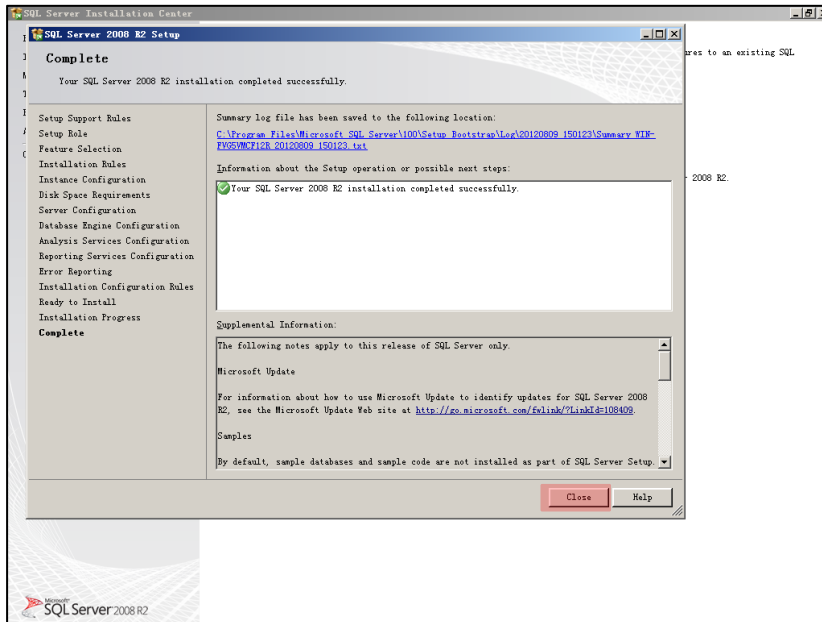
Click **Next** to proceed.



Ready to Install
Click **Install** to proceed.

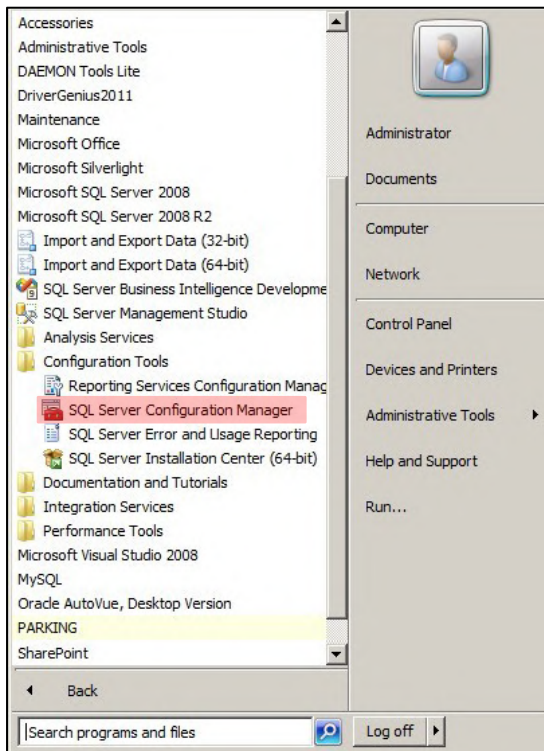


Installation Progress
Installation takes quite a few minutes, go cook a coffee.



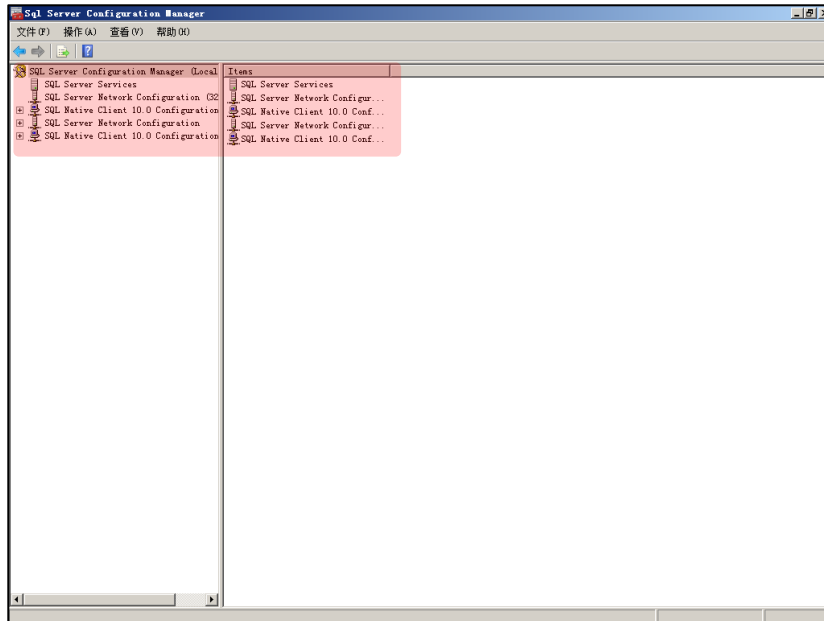
Complete

Finally, click **Close** to finish SQL installation. Now only a few steps left before installing PGS software.



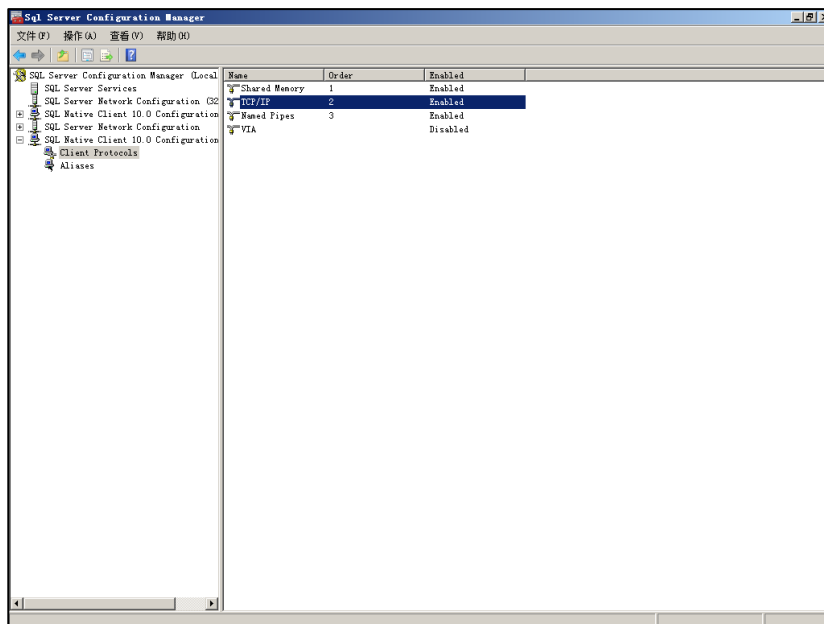
Configuration Manager

Open up **SQL Server Configuration Manager**, there's some setup info to confirm.



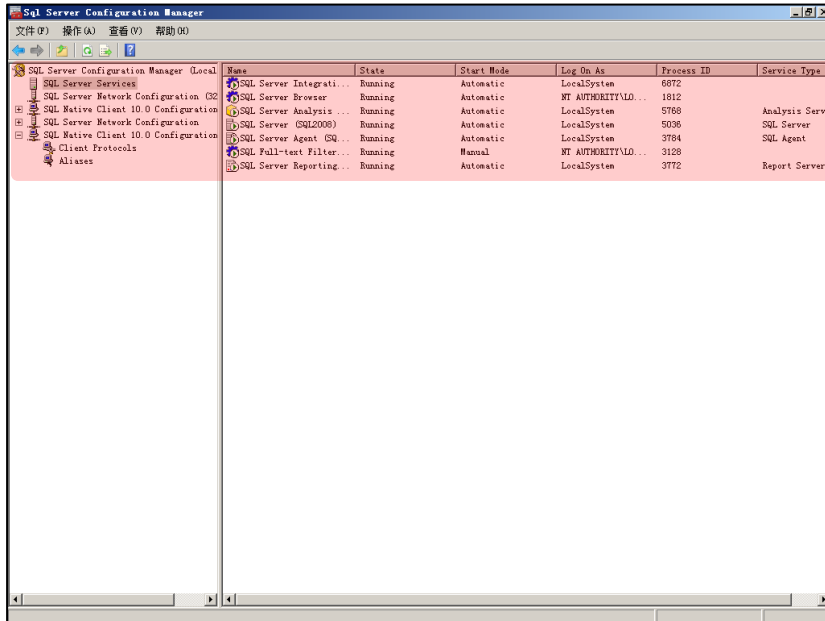
Configuration Confirm

Make sure it looks all the same on your PC.



Configuration Confirm

Make sure **TCP/IP** is **Enabled**.



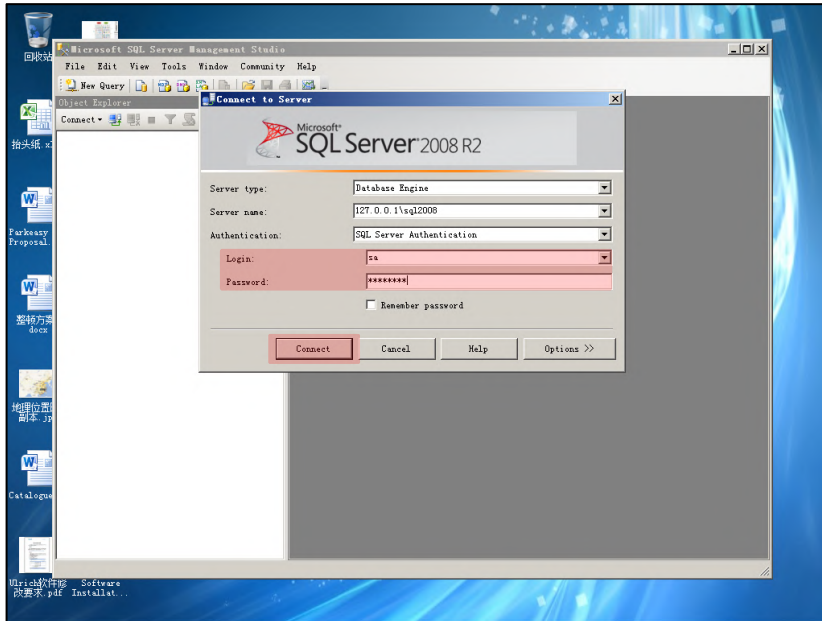
Configuration Confirm

Make sure it looks all the same on your PC.



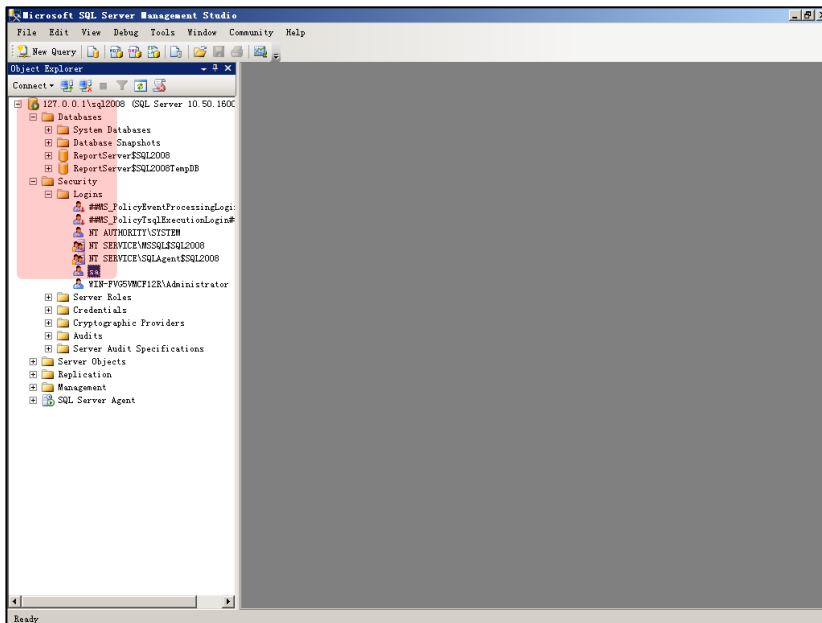
Server Management

Open up *SQL Server Management Studio*, there's some setup to do.



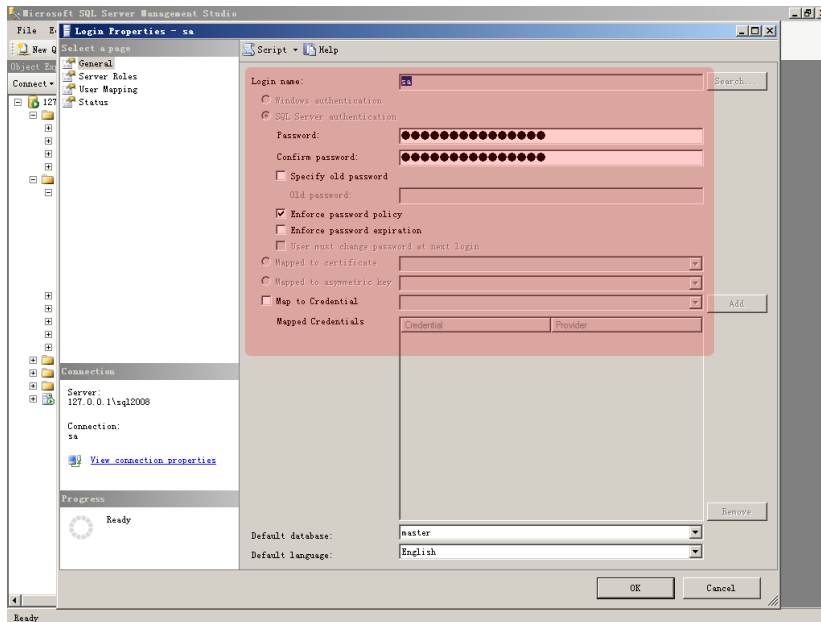
Login

Input user name **sa** and **password (the one you just set up during SQL installation)**, click **Connect** to proceed.

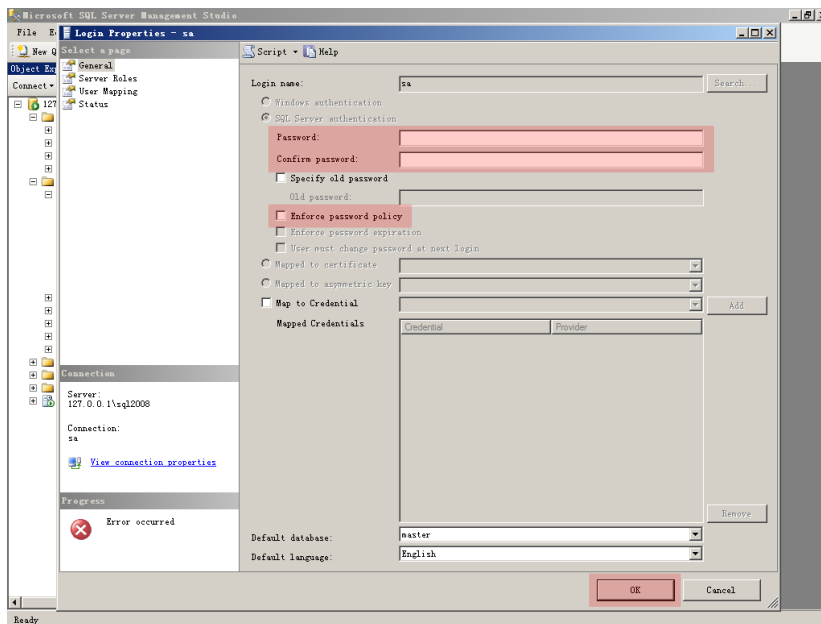


Change password

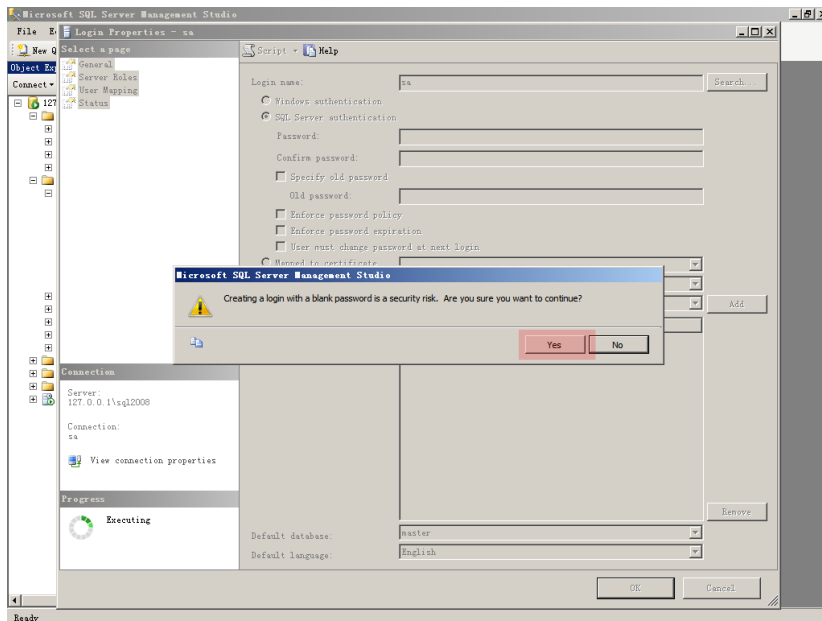
Double click **sa** to open up **Login Properties – sa**.



Login Properties – sa
Original status



Clear Password
Clear *password*, un-tick *Enforce password policy*, click *OK* to confirm.



Confirm

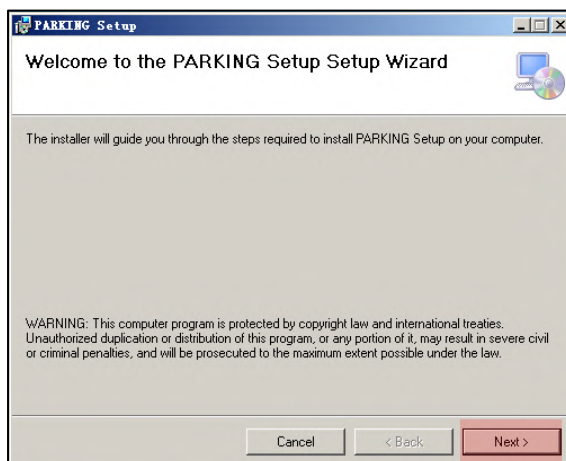
Click **Yes** to confirm.
SQL installation finalized.

Tips: Before installing new version SQL software, the old version must be **COMPLETELY** uninstalled.

2. Install PGS

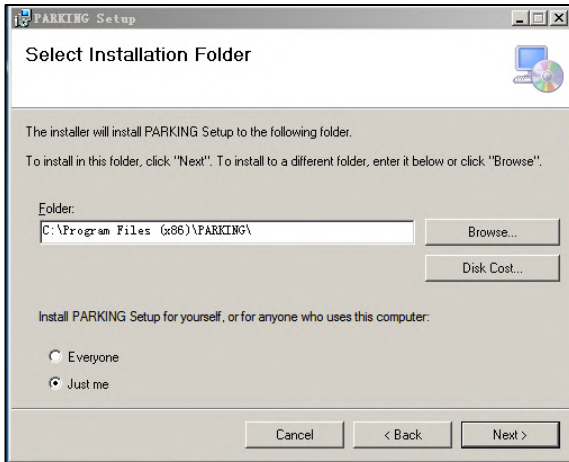
Simply follow the steps one by one to install PGS mangement software:

Very important tip: must login OS as system administrator!

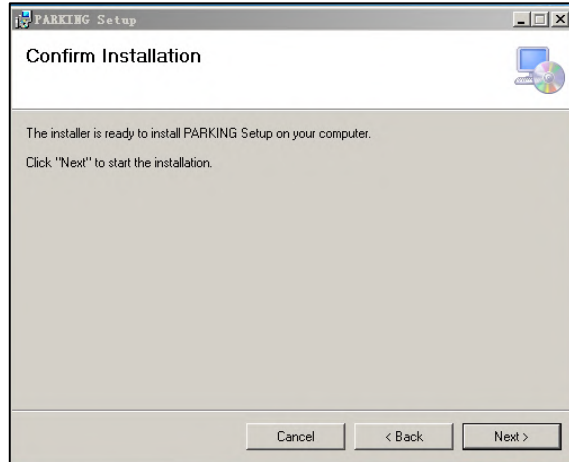


Welcome page

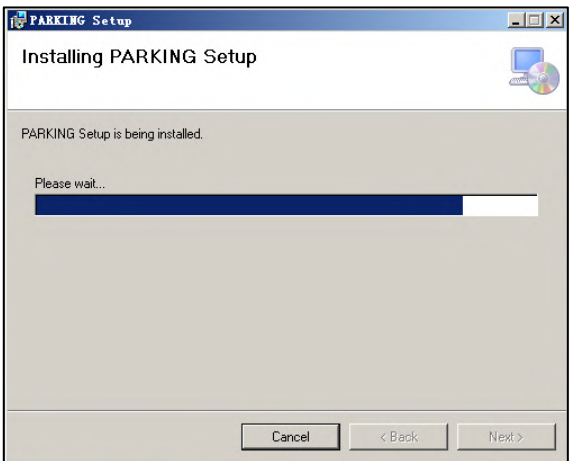
Click **Next** to proceed.



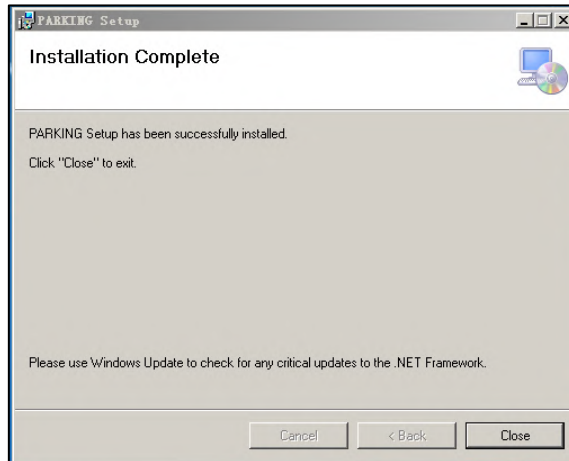
Select Installation Folder



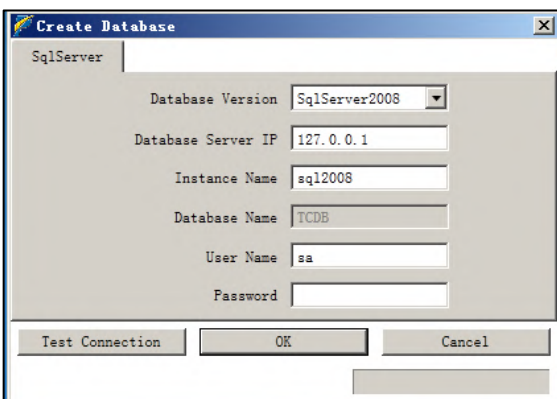
Confirm Installation



Installation Progress



Installation Complete



Initialization

Click Ok to create database

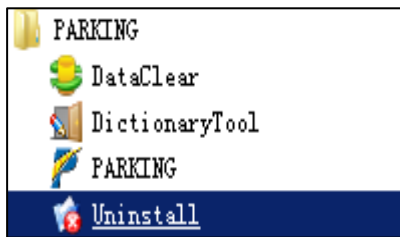


Get Started

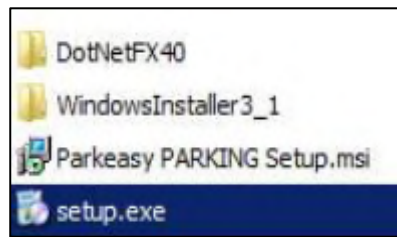
Login

3. Uninstall PGS

The uninstallation of PGS management software is as simple as its installation, you may uninstall it from one of the followed:



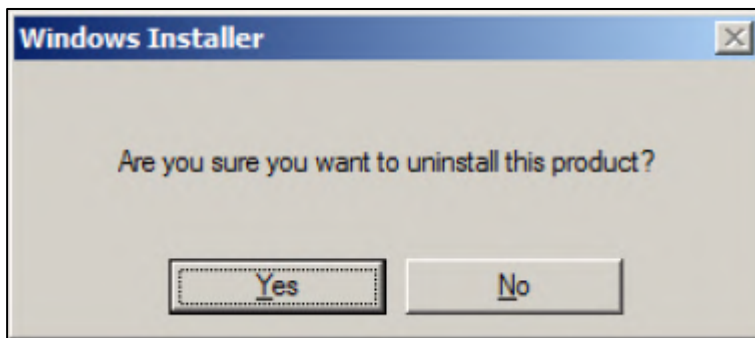
From Start menu



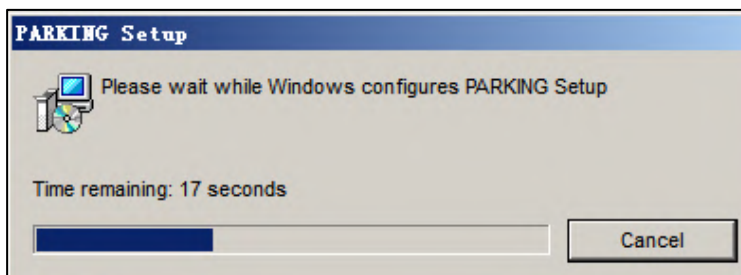
From Installation kit



From Control Panel

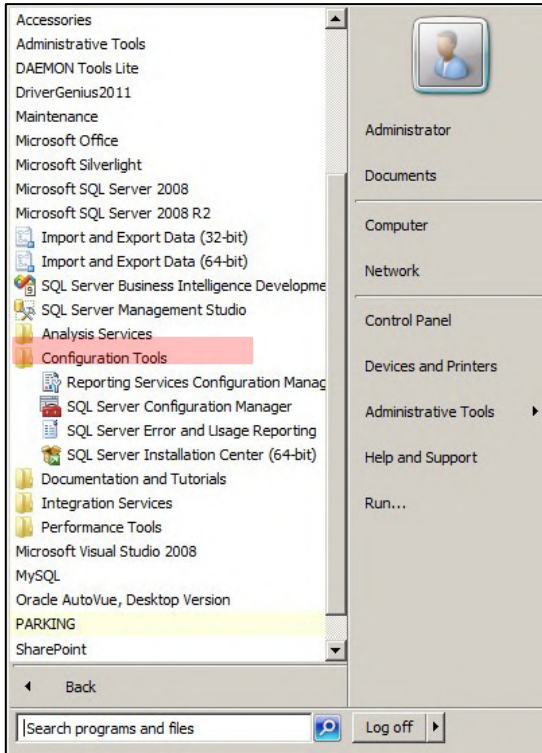


Click **Yes** to uninstall



Uninstallation progress

Important tip: before reinstalling PGS software, must delete **TCDB** from database; go to the next page for details.



Delete TCDB

Open up *SQL Server Management Studio*.

Delete *TCDB* as per the picture below.

